



Variable Frequency Industrial Spot Welder Gantry Type Row Welding Machine 150KVA

Our Product Introduction

for more products please visit us on wire-bendingmachine.com

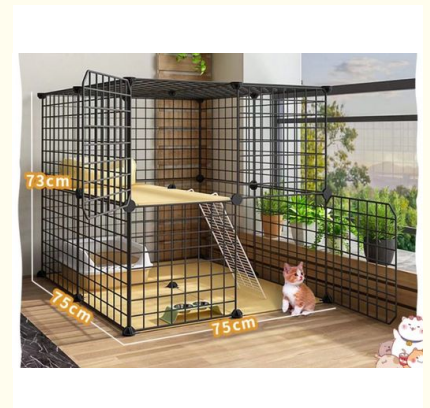
Basic Information

- Place of Origin: Guangdong, China
- Brand Name: Jin Hongxiang
- Certification: CE
- Model Number: JD-150
- Minimum Order Quantity: 1 set
- Price: Negotiable
- Packaging Details: Export safety wooden case
- Delivery Time: 5-10 working days. Or negotiation
- Supply Ability: 50 Set/Sets per Month



Product Specification

- Product Name: Spot Welder
- Applicable Industries: Building Cover Plate, Railway / Road Guardrail, Pet Cage, Storage Rack, Net Basket
- Rated Capacity: 150KVA*2
- Usage: Welding, Multi-point Welding
- Voltage: 380V, 50HZ
- Key Selling Points: Taiwan's Water-cooled Wet Control Transformer Will Not Be Affected By Overload
- Weight (KG): 450 KG
- Control System: Touch Electric Box Control
- Cylinder Stroke: 50MM
- Nominal Frequency: 50/60HZ
- Feature: Sufficient Power, Beautiful Welding, Firm And Fast Response
- Port: Shenzhen, China



Product Description

Variable frequency gantry type row welding machine



Introduction to this machine

This machine is a frequency conversion gantry type row welding machine, the transformer is AC type, and the electric control box is frequency conversion type. It can ensure both welding strength and stable welding current. Moreover, it has little impact on the power grid and saves electricity, which is very suitable for the situation that there are many factories and machines with insufficient power grids. It is the combination of AC welding machine and medium frequency welding machine.

Gantry welding machine host

1. The input voltage is 380V, the power is 150KVA * 2, there are 18 three-layer cylinders, the internal width of the machine is 2300MM, and the effective welding width is 2000MM. Welding row welding die is equipped with 100MM long chrome copper electrode.
2. The main transformer is made of full red copper coil, high grade silicon steel, powerful transformer, strong current, and the maximum short-circuit current is 32000A. And there is water circulation cooling, temperature control device, comprehensive protection of the machine can work for a long time with high current. Overload will automatically power off.
3. The control box is two frequency conversion control boxes. The control frequency of the frequency conversion controller is 5KHZ, with high control accuracy and stable current, so as to ensure that the welding process reduces spatter and the welding effect is better.
4. The cylinder is a three-layer adjustable cylinder, which is fast, powerful and easy to adjust. Taiwan Yadeke solenoid valve, stable and durable.

2 sets of upper and lower exchange die for gantry welding machine automatic feeding rack

1. Two sets of mesh welding pushing dies, and two sets of dies are exchanged up and down for welding. Save time and space. The pushing die is used to install the welding die, not the clamping die that can be directly welded.
2. The mold installation space is a maximum of 2m wide * 1.5m long mesh.
3. There are 2 sets of servo motors and 1 set of PLC+human-machine interface. The design is user-friendly and easy to adjust.
4. During operation, the machine automatically sends the mold for welding, automatically returns, and automatically ejects the mold.
5. The widened and thickened aluminum profile support is stable and solid, and easy to adjust.

Overview:

The equipment pays attention to multi-point welding, saving time, labor and high efficiency. Generally customized according to product conditions and customer requirements.

By transformer:

it can be made into double transformer type, single transformer type, medium frequency type and frequency conversion type.

Other names

According to the number of force doubling cylinders:

it can be made into 4-20 cylinders.

According to the product size: it can be made, 1m wide and 1.35M long. Or 1.5m wide, 1.35M long, or 2m * 1.35M, many kinds. If it is a loading cabinet outlet, it is better to make it within 1.5m wide * 1.35M long.

According to the feeding mode:

it can be pushed manually, feed the front and rear dies automatically, and exchange the die feeding up and down automatically.

another name

Gantry spot welder,

gantry row welder,

multi head spot welder,

multi spot welder,
storage rack spot welder

mesh row welder,

multi cylinder spot welder,

Spot welding machine,
touch welding machine,
multi spot welding machine,
welding machine,
sheet metal spot welding machine,
nut spot welding machine,
stainless steel spot welding machine,
special spot welding machine,
mesh spot welding machine,
wire mesh spot welding machine,

air pressure spot welding machine,
butt welding machine,
medium frequency spot welding machine,
high-power spot welding machine,
wire spot welding machine,
AC spot welding machine,
galvanized sheet spot welding machine,
battery spot welding machine,
multi cylinder spot welding machine,
DC spot welding machine,

row welding machine,
pneumatic spot welding machine,
welding machine, pneumatic
precision spot welding machine,
resistance spot welding machine,
three-phase spot welding machine,
Customized spot welding machine,
Taiwan spot welding machine,
gantry spot welding machine,
small spot welding machine,

Product Description

Performance characteristics

1. Three layer force multiplying cylinder, the cylinder is directly small, and the pressure is doubled to achieve better welding pressure



2. All red copper water cooling temperature control device of transformer has the advantages of long service life, low noise, safety and convenient use.

A. Taiwan transformer features: sufficient capacity, greater welding force and stronger conductivity.

B. Water circulation cooling, which can be used within the rated range to ensure 24 hours of operation.

C. Moreover, the temperature control device can work overload and automatically cut off power to protect the whole machine from being affected.



3.The water-saving forced cooling mode is adopted, and the main circuit adopts high-power SCR contactless switch, with high conductivity and low power loss , High temperature automatic protection.



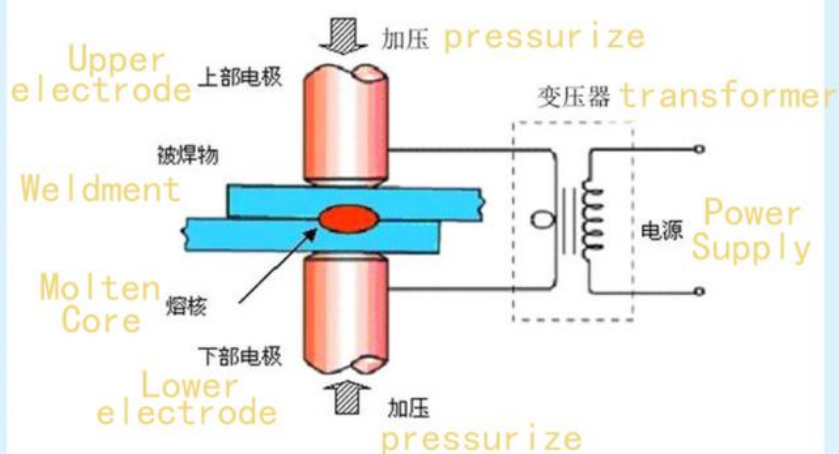
4.The transparent water flow valve is customized in Taiwan. There are nearly 100 cylinder + solenoid valve actions of gantry welder, and dozens of water circulation. With this gadget, no matter which route has a problem, it is easy to find and see it safely,



Principle of spot welding

焊接原理展示

Display of welding principle



Technical parameters:

机型 Model	定容量 Rated power KVA	入 Input voltage V	定 率 Nominal frequency HZ	最大短路 流 Maximum short circuit current A
JD-60	60	380	50/60	22000
JD-80	80	380	50/60	28000
JD-100	100	380	50/60	30000
JD-120	120	380	50/60	32000
JD-150	150	380	50/60	34000
JDX-35	35	380	50/60	15000
JDX-50	50	380	50/60	20000

Spot welding product display

Pet cage display



Warm tip: our products are constantly upgrading and adjusting.

If the pictures displayed are different from the real object,

the real object shall prevail, and will be confirmed when placing the order.



Dongguan Jinghongxiang Automation Equipment Co., Ltd.



13925780098



jhx16888@gmail.com



wire-bendingmachine.com

No. 78, Shangzhong Road, Shangdi Industrial Zone, Liaobu Town, Dongguan, Guangdong, China